



Shift2Rail

Innovation Programme 3

Cost Efficient and Reliable High Capacity Infrastructure

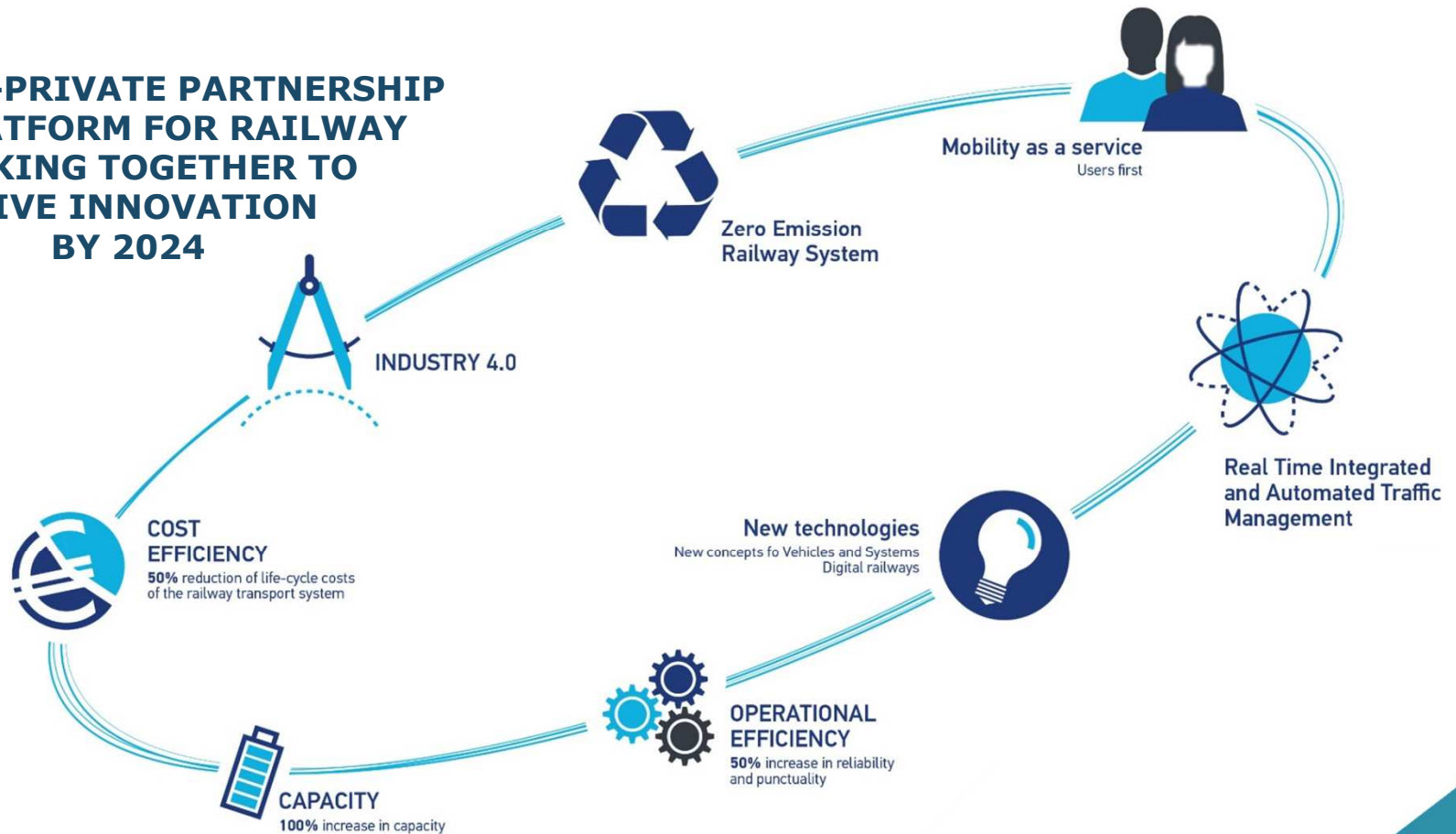
NetIRAIL-INFRA final conference
Ljubljana, 24 May 2018

@Shift2Rail_JU
#Horizon2020





**A PUBLIC-PRIVATE PARTNERSHIP
R&I PLATFORM FOR RAILWAY
WORKING TOGETHER TO
DRIVE INNOVATION
BY 2024**

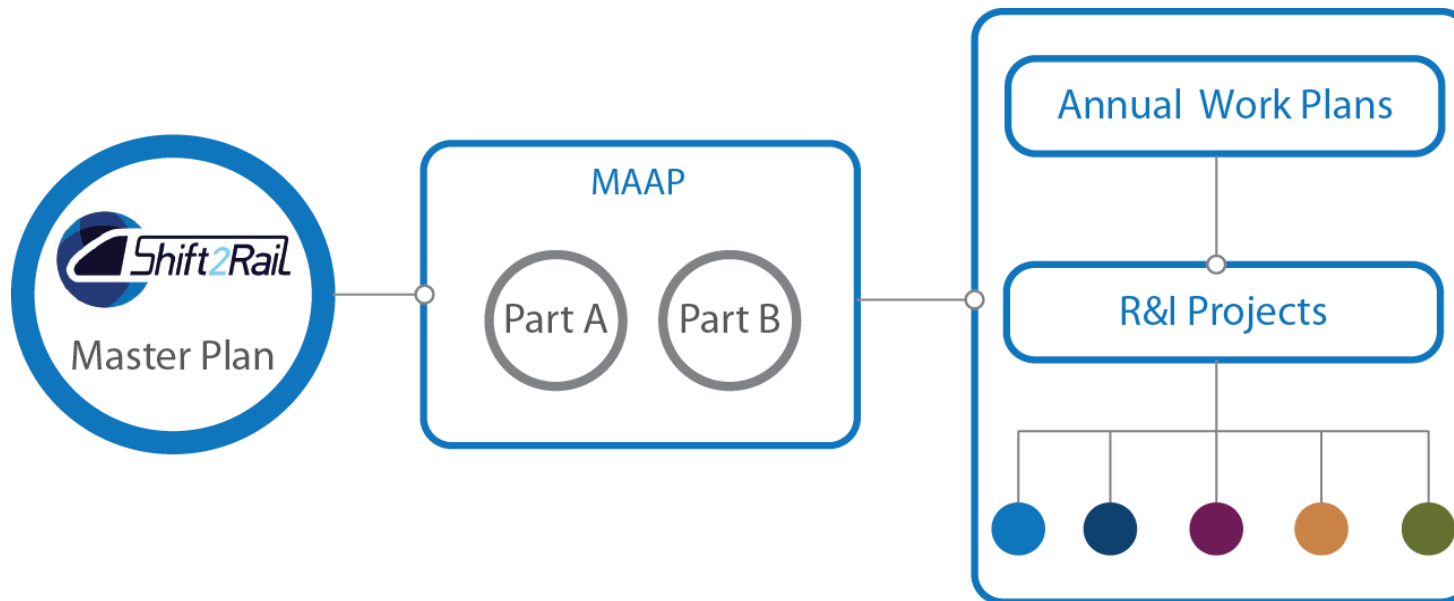


S2R VISION:

To **deliver** through railway **research & innovation** the **capabilities** to bring about the most **sustainable, cost-efficient, high-performing, time driven, digital** and **competitive customer-driven** transport **mode** for Europe



The S2R Programme Implementation

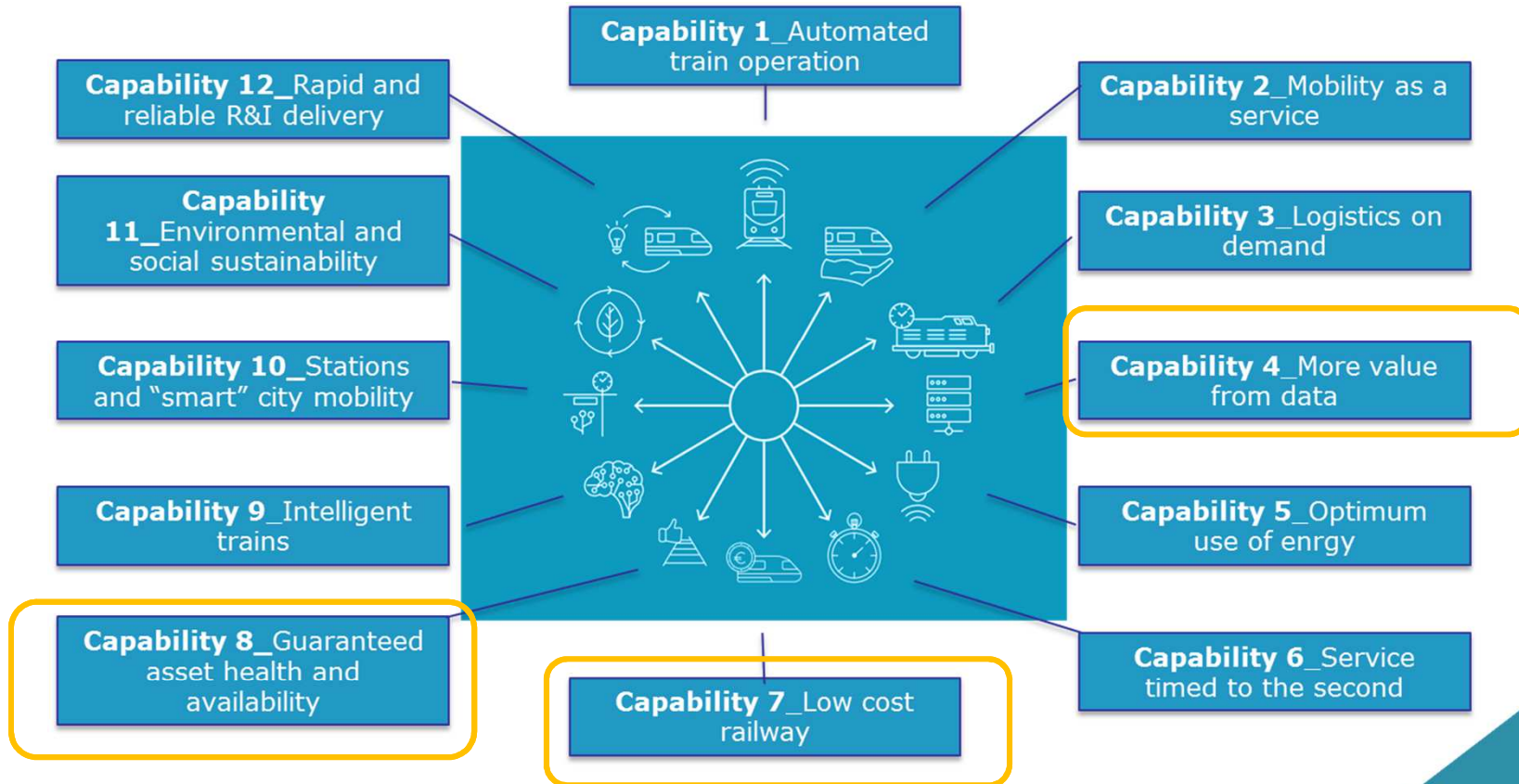


The S2R MAAP*

- is a collaborative long-term investment planning document, which contains an Executive View (**Part A**) providing the **S2R vision and Capabilities**
- translates strategic R&I priorities for the Railway sector – as per S2R Master Plan - into **concrete R&I activities, milestones and deliverables**
- contains the description of R&I activities worth an estimated **value of about EUR 777 million**
- **is a living document** (ongoing “maintenance” for **Part B**)
- enables the preparation of result-oriented **Annual Work Plans** and **Calls for Proposals or Tenders**
- **grants awarded** for the actions(Projects) should aim to implement part(s) of the MAAP

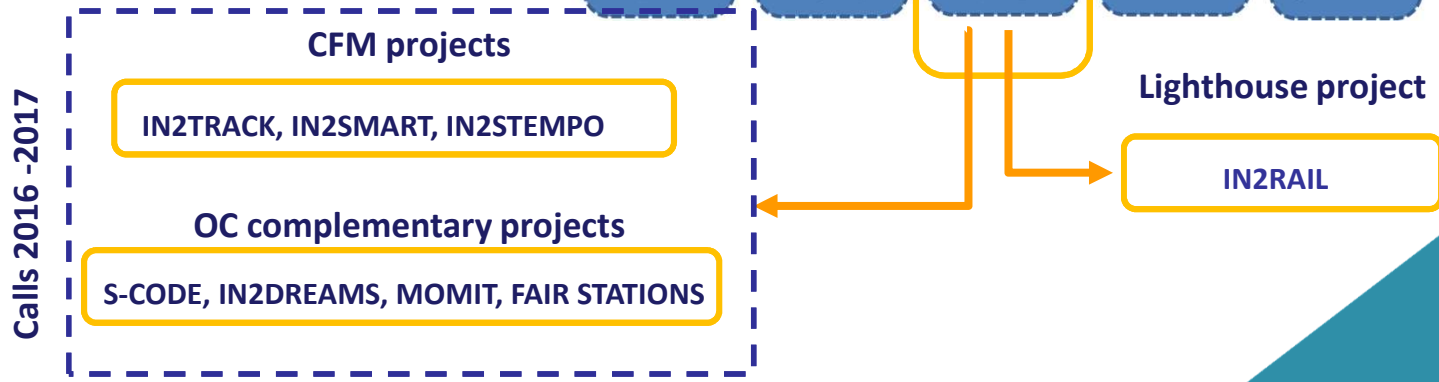
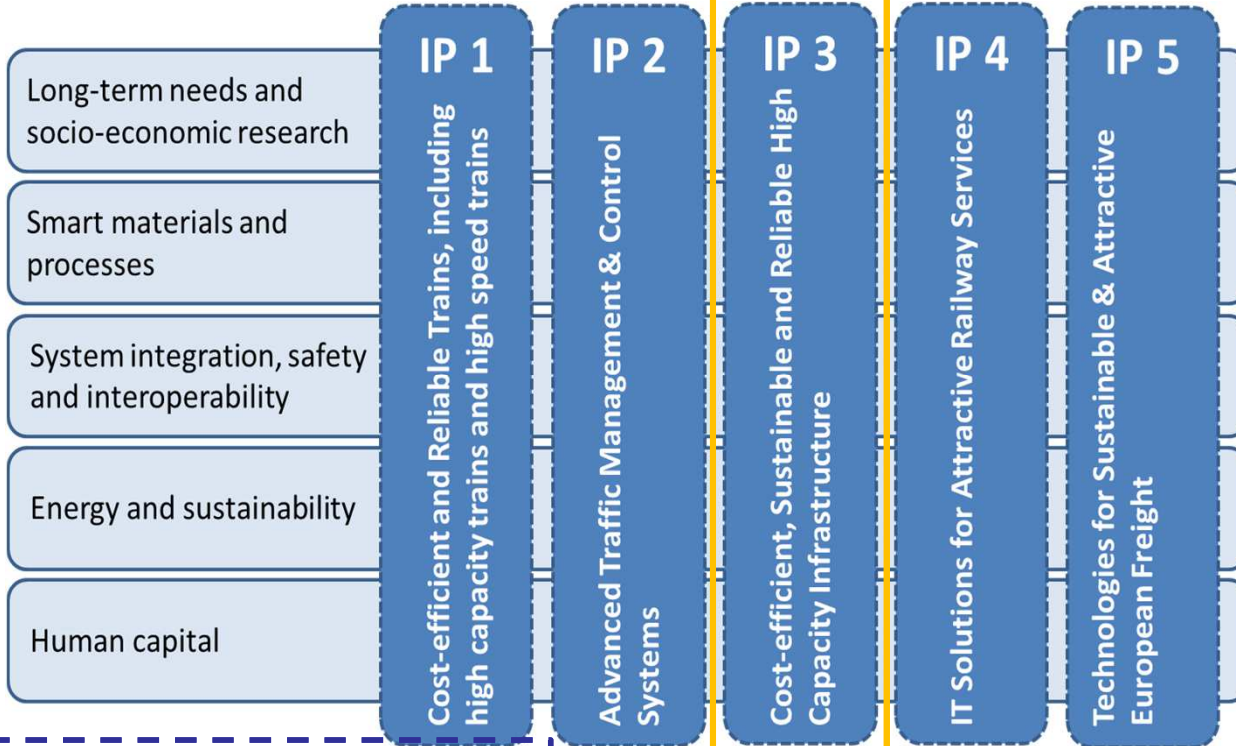
* multi-annual action plan

Innovation Capabilities



R&I for Innovation Capabilities

**S2R PROGRAMME:
INTEGRATED
CONSISTENT
DELIVERY ORIENTED**

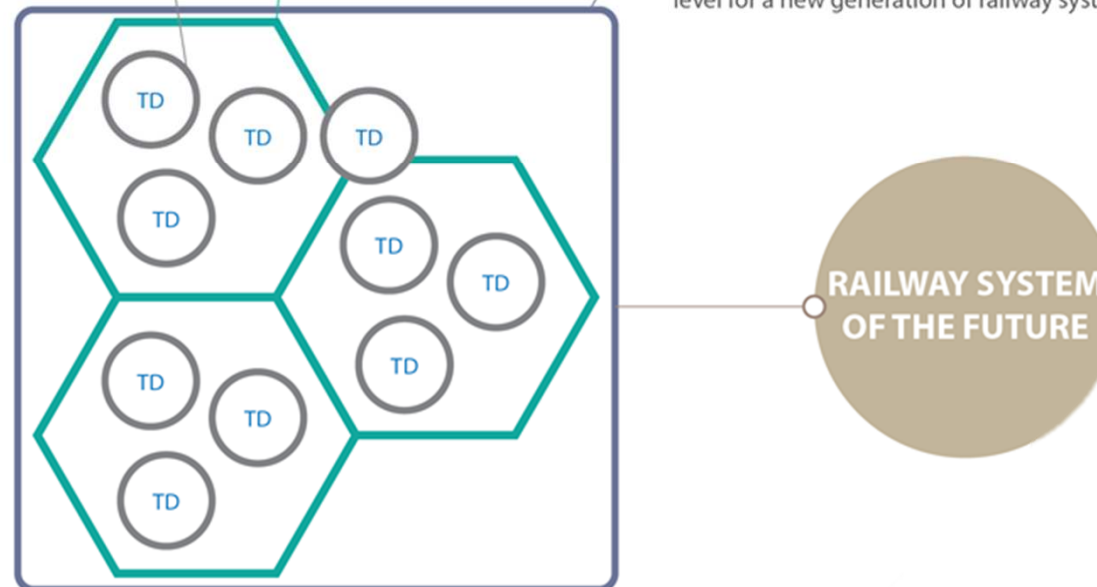


From TRL0 to TRL6/7

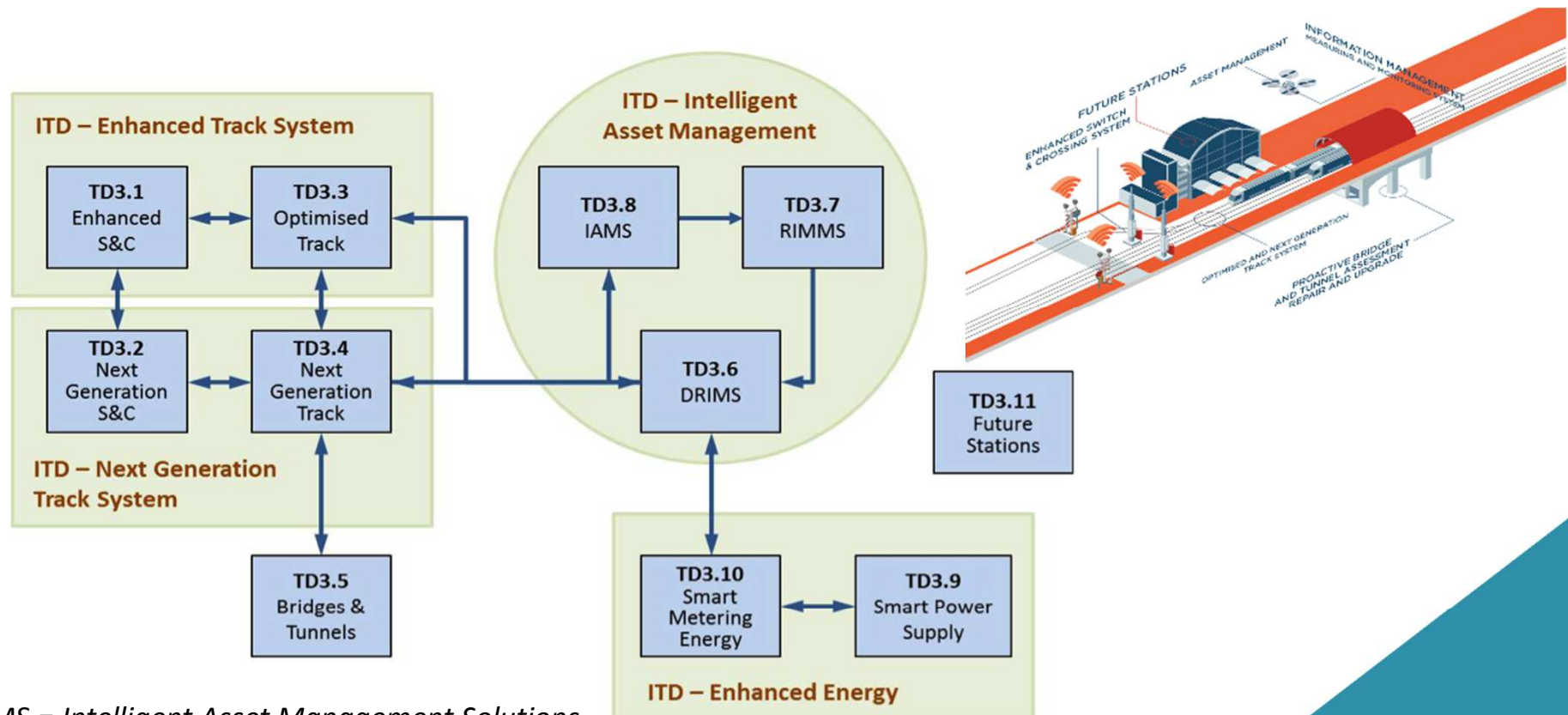
Technology Demonstrator (TDs)
Projects specifying, developing and demonstrating a specific technology resulting in a lab tested and/or simulated prototype

Integrated Technology Demonstrators (ITDs)
Projects integrating/combining TD prototypes at system level (lab and on-site) and testing performance

System Platform Demonstrators (SPDs)
Assessment of the whole systems performance based on the results of TDs and ITDs. SPDs bring S2R innovative solutions to a technology maturity level for a new generation of railway system



Innovation Programme 3: Cost Efficient and Reliable High Capacity Infrastructure



IAMS = *Intelligent Asset Management Solutions*
 RIMMS = *Railway Integrated Measuring and Monitoring System*
 DRIMS = *Dynamic Railway Information Management System*

IP3: Key innovations

- ✓ **Intelligent asset management:** shift from current used reactive and/or preventive maintenance to condition based and/or predictive maintenance, based on intelligent monitoring/analysis of the assets. IT decision supporting tools and new processes/procedures. Lower costs and down-time
- ✓ **Enhanced energy management:** smart metering of energy consumption for optimised use and power supply equipment able to optimise energy use and link to smart-grid.
- ✓ **Enhanced track system:** new solutions to improve the life-cycle of tracks and S&C. Continuous monitoring techniques for better design solutions and automated maintenance. Noise & vibration reduction
- ✓ **Next gen track system:** disruptive technology applicable to both track and S&C. possible tonnage increase, maintenance increased automation. Noise & vibration reduction
- ✓ **Station:** design taking into account new IT techniques, crows flow and new management strategies

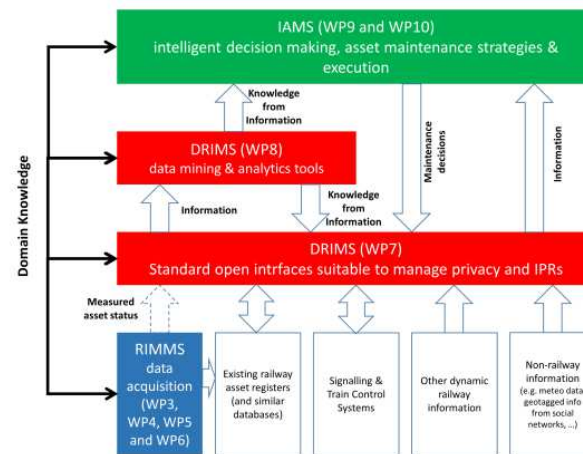
Programme approach, future/ current projects

- EACH PROJECT contributes to the **achievement of the Master Plan and the MAAP objectives**
- EACH PROJECT is part of a programme and **cooperation with other projects** must be ensured
→ Through the **collaboration and input to the JU Members**, EACH PROJECT will support the realization of **long-term S2R technological demonstrations or innovative break-through**
- Particular attention is given to ensure that there is **no duplication of work** between EACH PROJECT and current/future R&I activities
- EACH PROJECT results are taken into consideration for the next annual work plans to ensure sufficient **complementarity** and **coherence**

IN2SMART

Intelligent Innovative Smart Maintenance of Assets by integRATED Technologies

S2R-CFM-IP3-02-2016 (01/09/2016 - 31/08/2019)



© 2016 — Shift2Rail

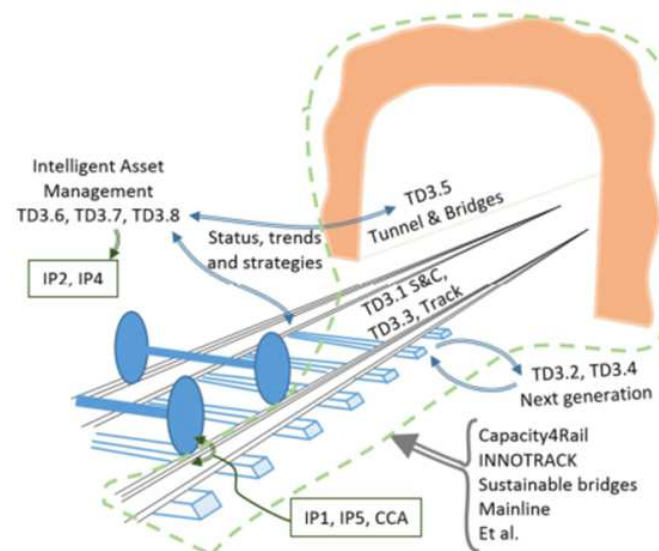
Relation to S2R MAAP:

- ✓ **TD3.7** Railway Information Measuring and Monitoring System (RIMMS)
- ✓ **TD3.6** Dynamic Railway Information Management System (DRIMS)
- ✓ **TD3.8** Intelligent Asset Management Strategies (IAMS)

IN2TRACK

Research into enhanced tracks, switches and structures

S2R-CFM-IP3-01-2016 (01/09/2016 – 28/02/2019)



© 2016 — Shift2Rail

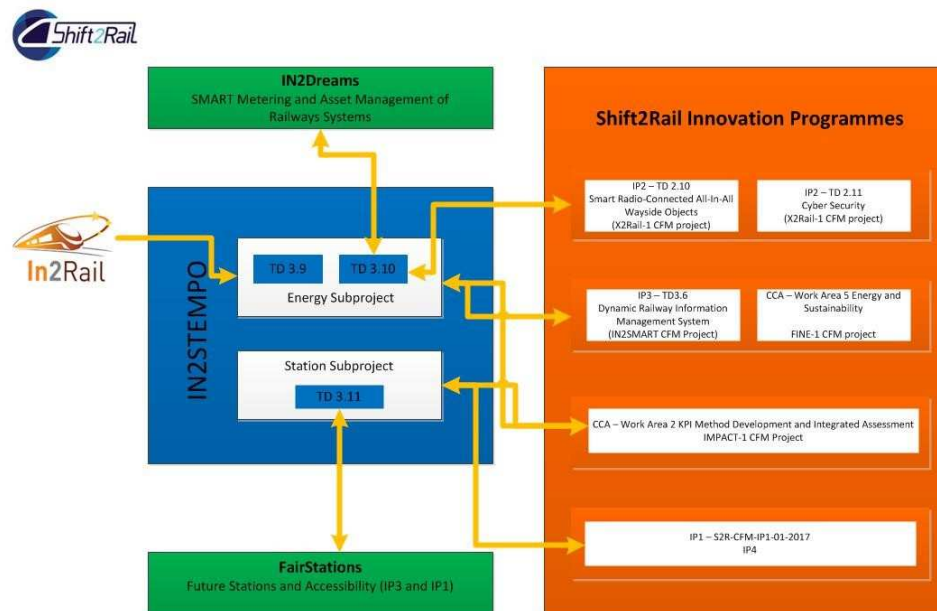
Relation to S2R MAAP:

- ✓ **TD3.1** Enhanced Switches & Crossings (S&C) System
- ✓ **TD3.3** Optimized Track System
- ✓ **TD3.5** Proactive Bridge and Tunnel Assessment, Repair and Upgrade

IN2STEMPO

Innovative Solutions in Future Stations, Energy Metering and Power Supply

S2R-CFM-IP3-01-2017 (01/09/2017 – 28/02/2022)



Relation to S2R MAAP:

- ✓ **TD3.9** Smart Power Supply
- ✓ **TD3.10** Smart Metering for Railway Distributed Energy Resource Management System
- ✓ **TD3.11** Future Stations



MOMIT

Multi-scale observation and monitoring of railway infrastructure threats

H2020-S2RJU-OC-2017 (01/09/2017 – 31/08/2019)

Complementary project to: IN2SMART



MOMIT
MULTI-SCALE OBSERVATION
AND MONITORING OF RAILWAY
INFRASTRUCTURE THREATS

S-CODE

Switch and Crossing Optimal Design and Evaluation

S2R-OC-IP3-01-2016 (01/11/2016 – 31/10/2019)

Complementary project to: IN2TRACK



IN2DREAMS

INtelligent solutions 2ward the Development of Railway Energy and Asset Management Systems in Europe

H2020-S2RJU-OC-2017 (01/09/2017 – 31/08/2019)

Complementary project to: IN2SMART & IN2STEMPO

IN2DREAMS

FAIR STATIONS

Fair Stations

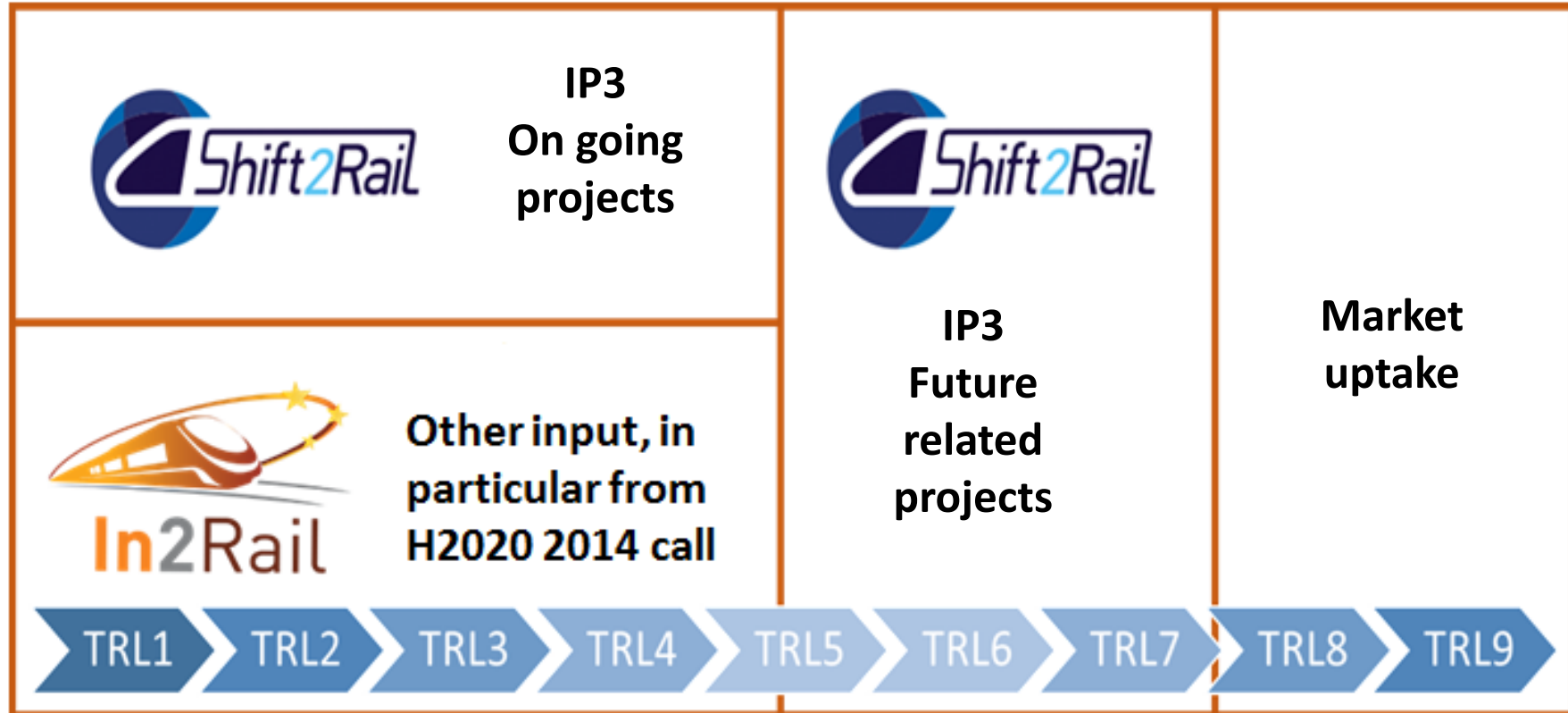
H2020-S2RJU-OC-2017 (01/09/2017 – 31/08/2019)

Complementary project to: IN2STEMPO

FAIR STATIONS



IP3 Next Steps



IP3: Planning of activities per TD

TD3.1 Enhanced Switch & Crossing System								
2015	2016	2017	2018	2019	2020	2021	2022	...
Ongoing: In2Rail, In2Track			AWP 2018: CFM			Planned Activities		

TD3.2 Next Generation Switch & Crossing System								
2015	2016	2017	2018	2019	2020	2021	2022	...
Ongoing: In2Rail, S-CODE			AWP 2018: CFM			Planned Activities		

TD3.3 Optimised Track System								
2015	2016	2017	2018	2019	2020	2021	2022	...
Ongoing: In2Rail, In2Track			AWP 2018: CFM			Planned Activities		

TD3.4 Next Generation Track System								
2015	2016	2017	2018	2019	2020	2021	2022	...
Ongoing: In2Rail		AWP 2018: CFM			Planned Activities			

IP3: Planning of activities per TD

TD3.5 Proactive Bridge and Tunnel Assessment, Repair and Upgrade								
2015	2016	2017	2018	2019	2020	2021	2022	...
Ongoing: In2Rail, In2Track				AWP 2018: CFM, OC		Planned Activities		

TD3.6 Dynamic Railway Information Management System (DRIMS)								
2015	2016	2017	2018	2019	2020	2021	2022	...
Ongoing: In2Smart, IN2DREAMS					Planned Activities			

TD3.7 Railway Integrated Measuring and Monitoring System (RIMMS)								
2015	2016	2017	2018	2019	2020	2021	2022	...
Ongoing: In2Rail, In2Smart, MOMIT				AWP 2018: OC		Planned Activities		

TD3.8 Intelligent Asset Management Strategies (IAMS)								
2015	2016	2017	2018	2019	2020	2021	2022	...
Ongoing: In2Rail, In2Smart					Planned Activities			

IP3: Planning of activities per TD

TD3.9 Smart Power Supply								
2015	2016	2017	2018	2019	2020	2021	2022	...
Ongoing: In2Rail, In2Stempo								
					Planned Activities			

TD3.10 Smart Metering for Railway Distributed Energy Resource Management System								
2015	2016	2017	2018	2019	2020	2021	2022	...
Ongoing: In2Rail, In2Stempo, In2Dreams								

TD3.11 Future Stations								
2015	2016	2017	2018	2019	2020	2021	2022	...
					Ongoing: In2Stempo, FAIR Stations			

Thank you for your attention



@Shift2Rail_JU
#Horizon2020

Nikolaos Athanasopoulos
S2R JU IP3 Programme Manager
Nikolaos.Athanasopoulos@s2r.Europa.eu

